

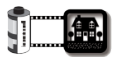
27
Orchard Street
Brockville

Last Revised: 2024-04-09
Page 1 of 4

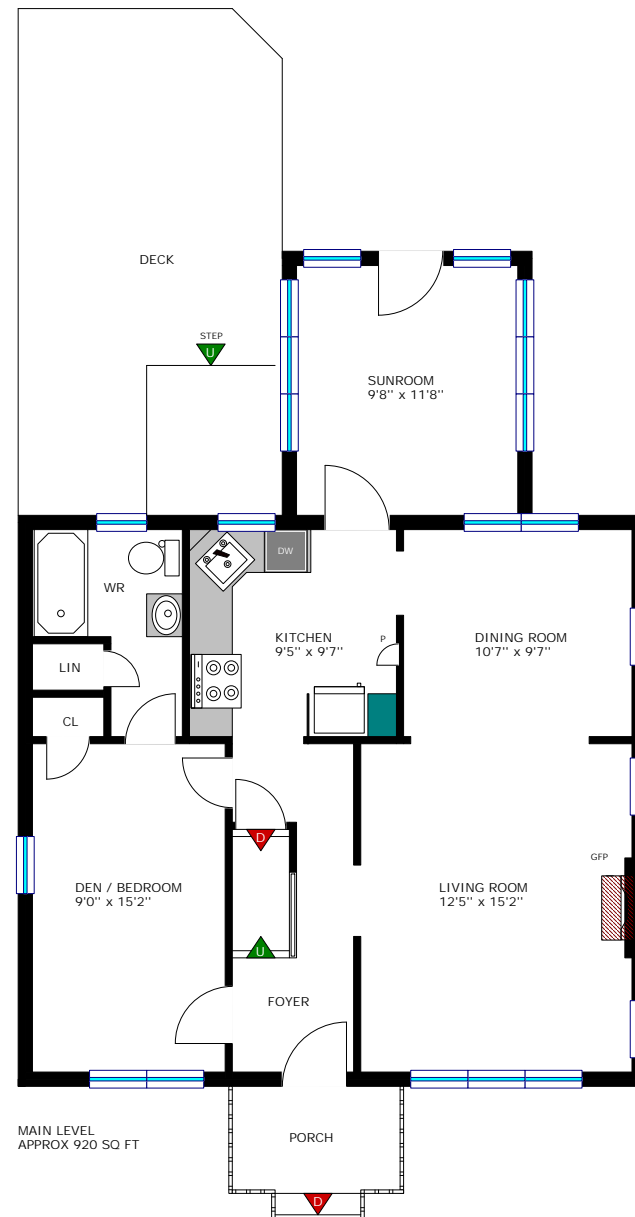
Debra Currier
Broker



Floor plan measurements and square footage are approximate, and drawings are for illustrative purposes only. We make no guarantee or warranty as to the accuracy and completeness of the floor plan. Please be sure to conduct an independent investigation of the property to determine the suitability for your space requirements.



www.realtyservices.ca



27
Orchard Street
Brockville

Last Revised: 2024-04-09
Page 2 of 4

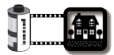
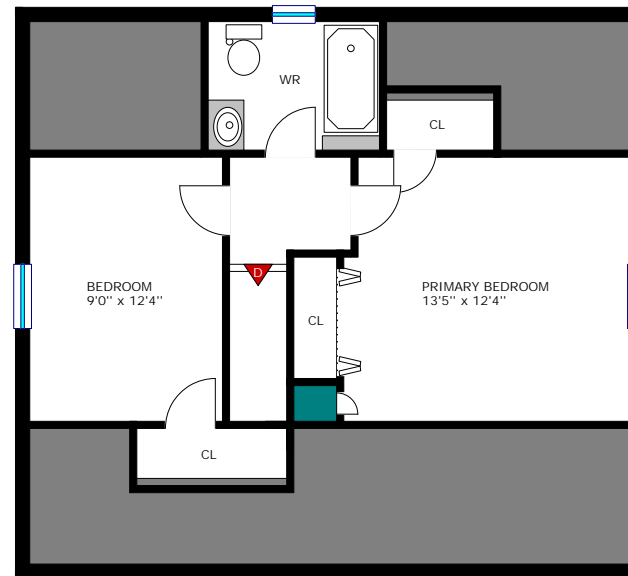
Debra Currier

Broker



Floor plan measurements and square footage are approximate, and drawings are for illustrative purposes only. We make no guarantee or warranty as to the accuracy and completeness of the floor plan. Please be sure to conduct an independent investigation of the property to determine the suitability for your space requirements.

SECOND LEVEL
APPROX 475 SQ FT



www.realtyservices.ca

27
Orchard Street
Brockville

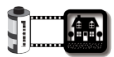
Last Revised: 2024-04-09
Page 3 of 4

Debra Currier

Broker

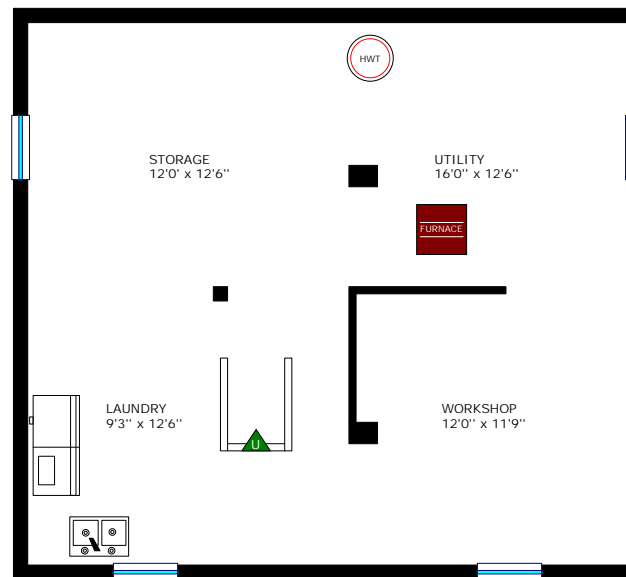


Floor plan measurements and square footage are approximate, and drawings are for illustrative purposes only. We make no guarantee or warranty as to the accuracy and completeness of the floor plan. Please be sure to conduct an independent investigation of the property to determine the suitability for your space requirements.



www.realtyservices.ca

BASEMENT
28'0" x 25'0"
6'4" CLEARANCE TO JOISTS



27
Orchard Street
Brockville

Last Revised: 2024-04-09
Page 4 of 4

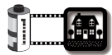
Debra Currier
Broker



Floor plan measurements and square footage are approximate, and drawings are for illustrative purposes only. We make no guarantee or warranty as to the accuracy and completeness of the floor plan. Please be sure to conduct an independent investigation of the property to determine the suitability for your space requirements.

Room Measurements

LEVEL	ROOM / AREA	IMPERIAL		METRIC (Metres)	
MAIN	Foyer	5'8"	x 6'0"	1.73	x 1.83
	Living Room	12'5"	x 15'2"	3.78	x 4.62
	Dining Room	10'7"	x 9'7"	3.23	x 2.92
	Kitchen	9'5"	x 9'7"	2.87	x 2.92
	Sunroom	9'8"	x 11'8"	2.95	x 3.56
	Den / Bedroom	9'0"	x 15'2"	2.74	x 4.62
	4-Pc Bath	7'0"	x 9'7"	2.13	x 2.92
SECOND	Primary Bedroom	13'5"	x 12'4"	4.09	x 3.76
	Bedroom	9'0"	x 12'4"	2.74	x 3.76
	4-Pc Bath	7'9"	x 5'11"	2.36	x 1.80
BASEMENT	Dimensions (Total)	28'0"	x 25'0"	8.53	x 7.62
	Laundry	9'3"	x 12'6"	2.82	x 3.81
	Utility	16'0"	x 12'6"	4.88	x 3.81
	Workshop	12'0"	x 11'9"	3.66	x 3.58
	Storage	12'0"	x 12'6"	3.66	x 3.81
OTHER	Front Porch	8'0"	x 5'0"	2.44	x 1.52
	Back Deck	12'0"	x 24'0"	3.66	x 7.32
	Garage	14'0"	x 30'0"	4.27	x 9.14



www.realtyservices.ca