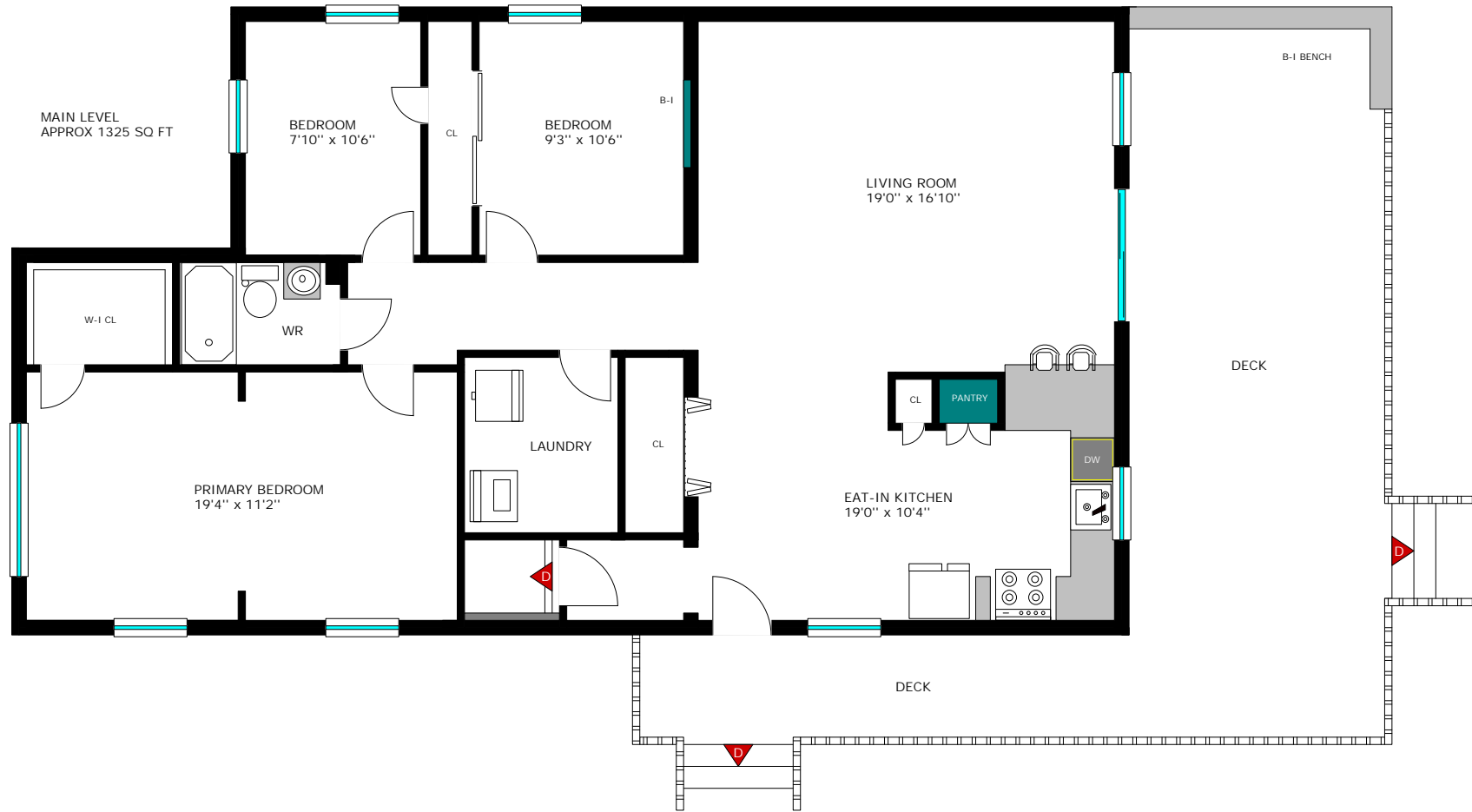


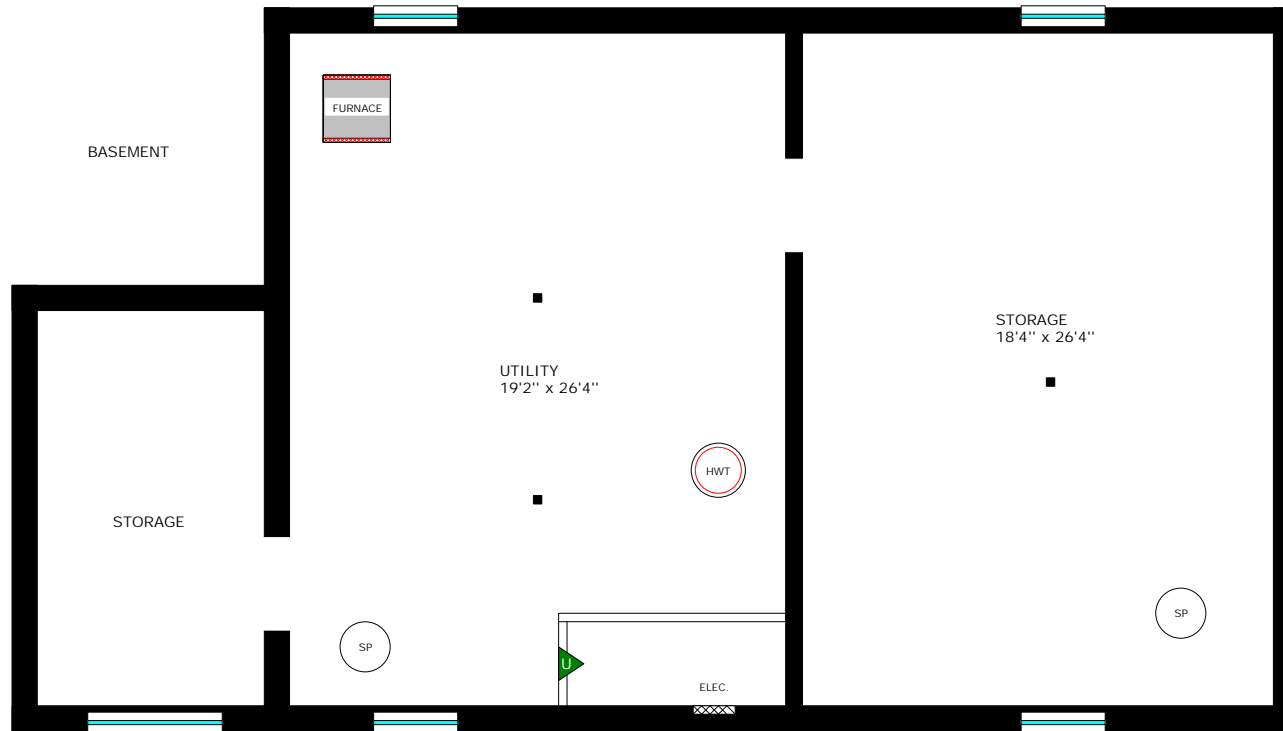
1053 County Road 15, Maitland



Floor plan measurements and square footage are approximate, and drawings are for illustrative purposes only. We make no guarantee or warranty as to the accuracy and completeness of the floor plan. Please be sure to conduct an independent investigation of the property to determine to your satisfaction as to the suitability of the property for your space requirements.

1053 County Road 15, Maitland

---



Floor plan measurements and square footage are approximate, and drawings are for illustrative purposes only. We make no guarantee or warranty as to the accuracy and completeness of the floor plan. Please be sure to conduct an independent investigation of the property to determine to your satisfaction as to the suitability of the property for your space requirements.

**Room Measurements**

<b>LEVEL</b>	<b>ROOM</b>	<b>IMPERIAL</b>	<b>METRIC (Metres)</b>
MAIN	Living Room	19'0" x 16'10"	5.79 x 5.13
	Eat-In Kitchen	19'0" x 10'4"	5.79 x 3.15
	Primary Bedroom	19'4" x 11'2"	5.89 x 3.40
	+ Walk-In Closet	6'7" x 4'8"	2.01 x 1.42
	Bedroom	9'3" x 10'6"	2.82 x 3.20
	Bedroom	7'10" x 10'6"	2.39 x 3.20
	4-Pc Bath	7'0" x 4'8"	2.13 x 1.42
	Laundry	6'9" x 7'11"	2.06 x 2.41
LOWER	Utility	18'4" x 26'4"	5.59 x 8.03
	Storage	19'2" x 26'4"	5.84 x 8.03
	Storage	8'6" x 14'4"	2.59 x 4.37
OTHER	Back Deck	12'0" x 30'0"	3.66 x 9.14
	Garage	27'0" x 24'0"	8.23 x 7.32
	Barn (W/Loft)	27'0" x 26'0"	8.23 x 7.92

Floor plan measurements and square footage are approximate, and drawings are for illustrative purposes only. We make no guarantee or warranty as to the accuracy and completeness of the floor plan. Please be sure to conduct an independent investigation of the property to determine to your satisfaction as to the suitability of the property for your space requirements.