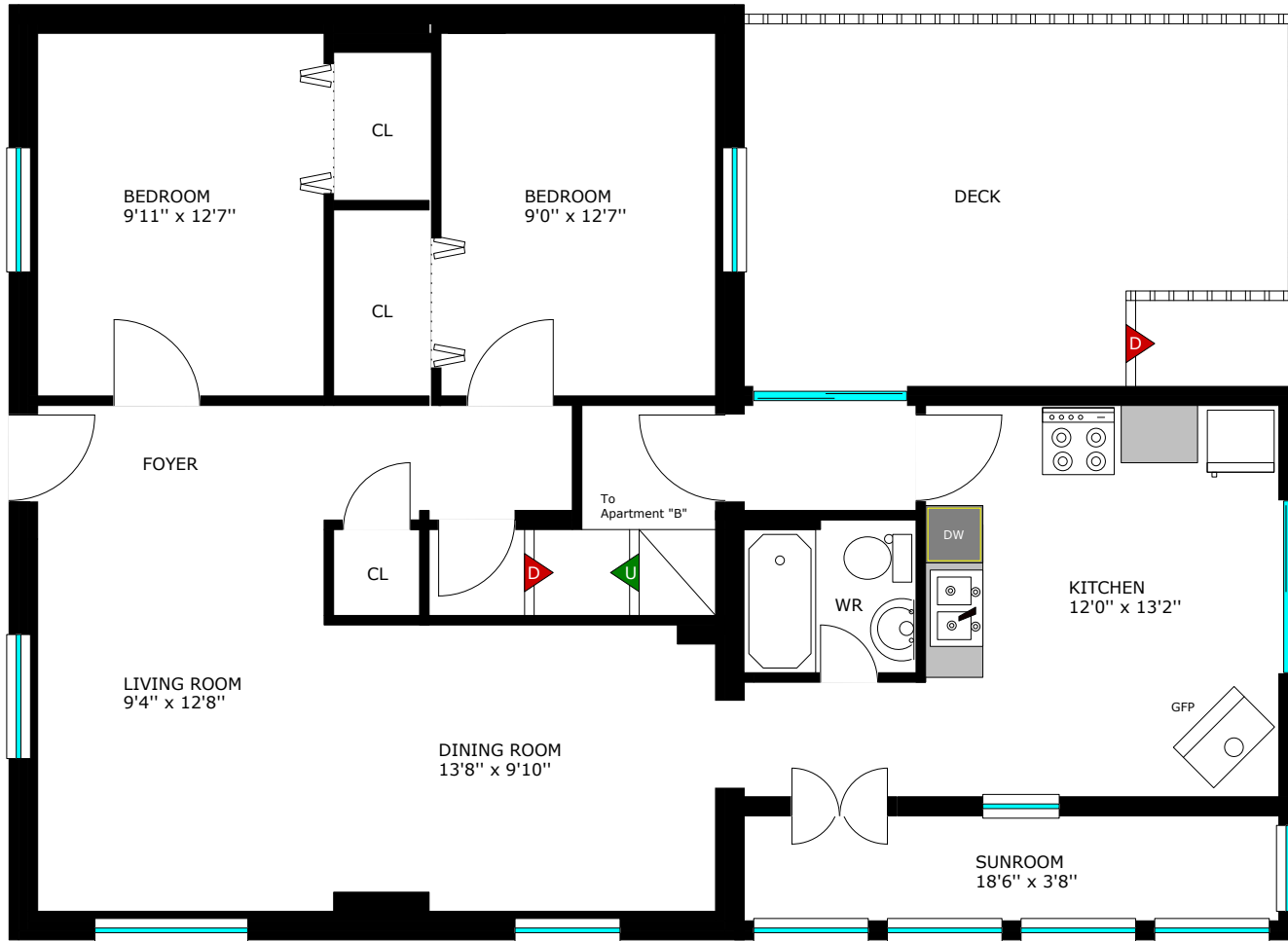


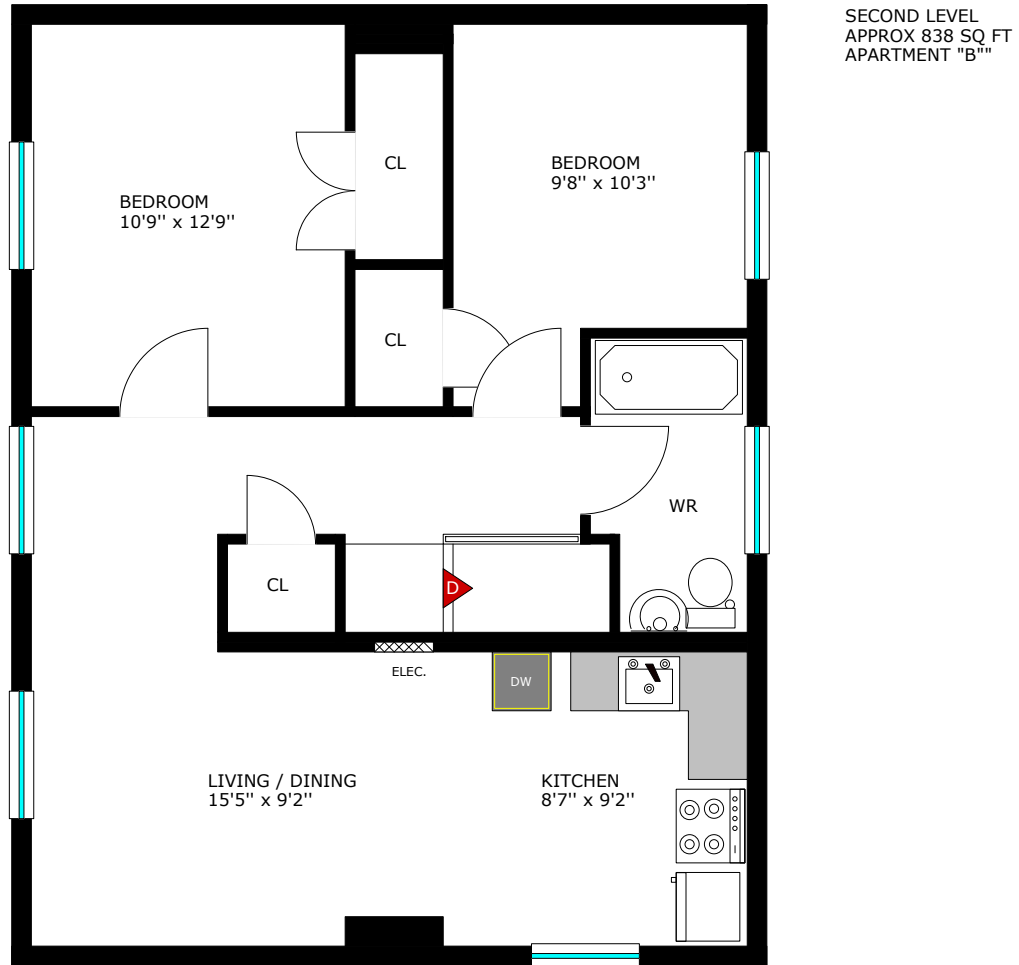
224 Walton Street, Port Hope



MAIN LEVEL
APPROX 1200 SQ FT
APARTMENT "A"

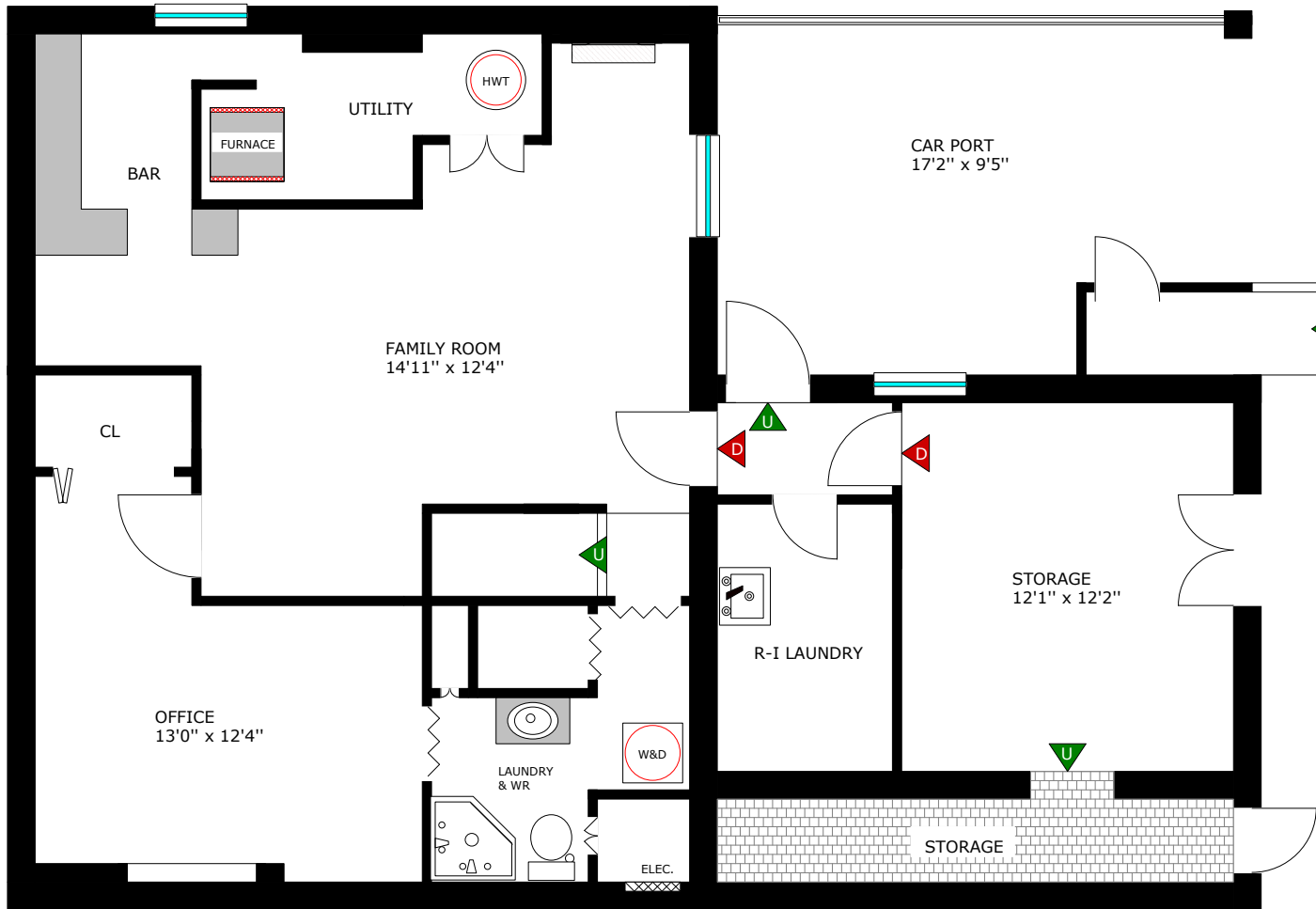
Floor plan measurements and square footage are approximate, and drawings are for illustrative purposes only. We make no guarantee or warranty as to the accuracy and completeness of the floor plan. Please be sure to conduct an independent investigation of the property to determine to your satisfaction as to the suitability of the property for your space requirements.

224 Walton Street, Port Hope



Floor plan measurements and square footage are approximate, and drawings are for illustrative purposes only. We make no guarantee or warranty as to the accuracy and completeness of the floor plan. Please be sure to conduct an independent investigation of the property to determine to your satisfaction as to the suitability of the property for your space requirements.

224 Walton Street, Port Hope



Floor plan measurements and square footage are approximate, and drawings are for illustrative purposes only. We make no guarantee or warranty as to the accuracy and completeness of the floor plan. Please be sure to conduct an independent investigation of the property to determine to your satisfaction as to the suitability of the property for your space requirements.

Room Measurements

Room measurements may contain typographical errors or omissions.

LEVEL	ROOM	IMPERIAL	METRIC (Metres)
MAIN (Apartment "A")	Foyer	12'6" x 4'6"	3.81 x 1.37
	Living Room	9'4" x 12'8"	2.84 x 3.86
	Dining Room	13'8" x 9'10"	4.17 x 3.00
	Kitchen	12'0" x 13'2"	3.66 x 4.01
	Bedroom	9'11" x 12'7"	3.02 x 3.84
	Bedroom	9'0" x 12'7"	2.74 x 3.84
	Sunroom	18'6" x 3'8"	5.64 x 1.12
	4-Pc Bath	5'11" x 5'3"	1.80 x 1.60
LOWER (Apartment "A")	Family Room	14'11" x 12'4"	4.55 x 3.76
	+ Bar	5'7" x 11'11"	1.70 x 3.63
	Office	13'0" x 12'4"	3.96 x 3.76
	Laundry & 3-Pc Bath	9'2" x 8'10"	2.79 x 2.69
	Utility	11'0" x 4'6"	3.35 x 1.37
	R-I Laundry	6'2" x 9'11"	1.88 x 3.02
	Storage Room	12'1" x 12'2"	3.68 x 3.71
	+ Storage (Crawl)	16'0" x 2'11"	4.88 x 0.89
SECOND (Apartment "B")	Living / Dining	15'5" x 9'2"	4.70 x 2.79
	Kitchen	8'7" x 9'2"	2.62 x 2.79
	Bedroom	10'9" x 12'9"	3.28 x 3.89
	Bedroom	9'8" x 10'3"	2.95 x 3.12
	4-Pc Bath	4'11" x 9'3"	1.50 x 2.82
OTHER	Deck	18'9" x 13'11"	5.72 x 4.24
	Car Port	17'2" x 9'5"	5.23 x 2.87

Floor plan measurements and square footage are approximate, and drawings are for illustrative purposes only. We make no guarantee or warranty as to the accuracy and completeness of the floor plan. Please be sure to conduct an independent investigation of the property to determine to your satisfaction as to the suitability of the property for your space requirements.