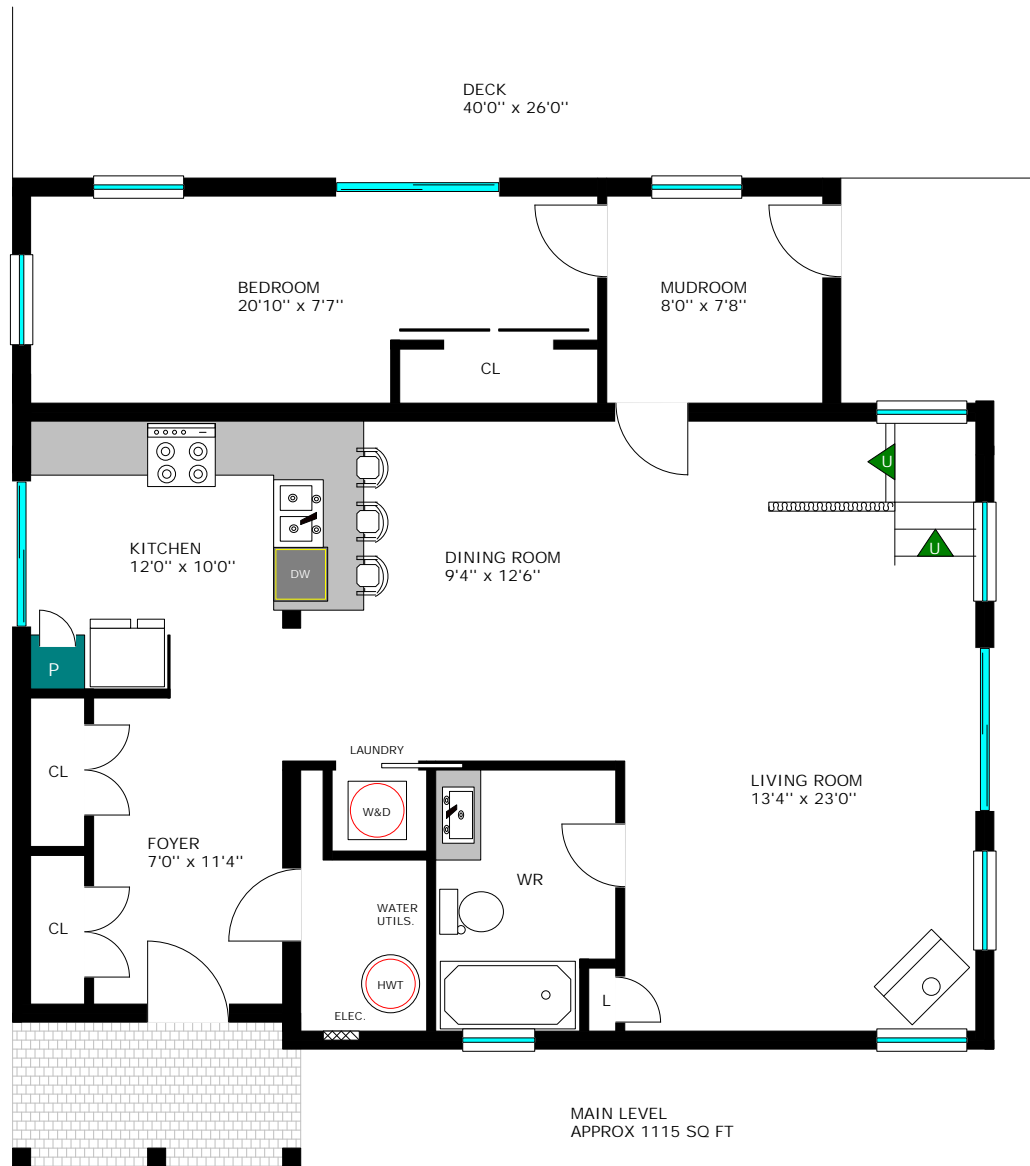


279
Montgomery Road
Roseneath

Last Revised: 2021-08-17
Page 1 of 4

Floor plan measurements and square footage are approximate, and drawings are for illustrative purposes only. We make no guarantee or warranty as to the accuracy and completeness of the floor plan. Please be sure to conduct an independent investigation of the property to determine to your satisfaction as to the suitability of the property for your space requirements.

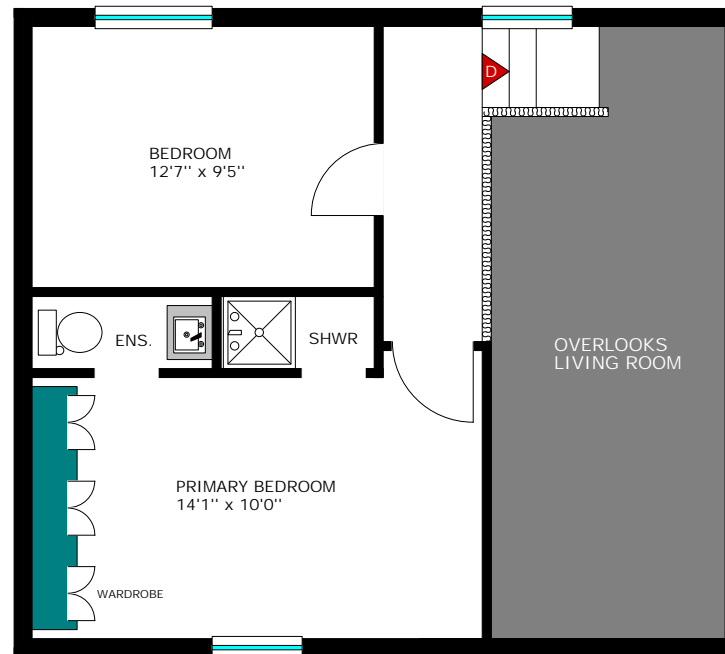


279
Montgomery Road
Roseneath

Last Revised: 2021-08-17
Page 2 of 4

Floor plan measurements and square footage are approximate, and drawings are for illustrative purposes only. We make no guarantee or warranty as to the accuracy and completeness of the floor plan. Please be sure to conduct an independent investigation of the property to determine to your satisfaction as to the suitability of the property for your space requirements.

SECOND LEVEL
APPROX 440 SQ FT

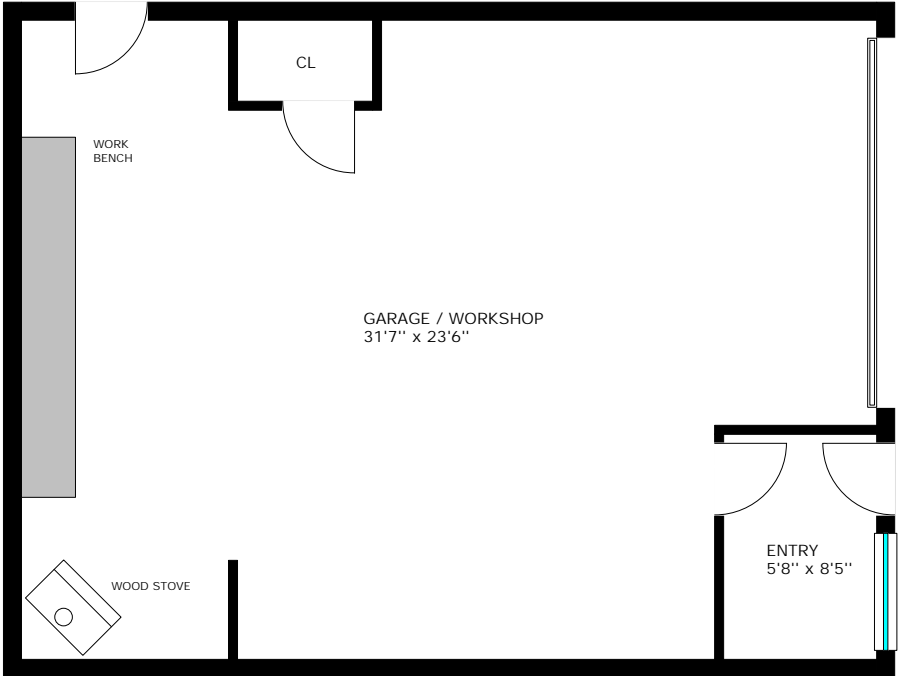


279
Montgomery Road
Roseneath

Last Revised: 2021-08-17
Page 3 of 4

Floor plan measurements and square footage are approximate, and drawings are for illustrative purposes only. We make no guarantee or warranty as to the accuracy and completeness of the floor plan. Please be sure to conduct an independent investigation of the property to determine to your satisfaction as to the suitability of the property for your space requirements.

GARAGE / WORKSHOP



279
 Montgomery Road
 Roseneath

Last Revised: 2021-08-17
 Page 4 of 4

Room Measurements

Room measurements may contain typographical errors or omissions.

LEVEL	ROOM	IMPERIAL	METRIC (Metres)
MAIN	Foyer	7'0" x 11'4"	2.13 x 3.45
	Living Room	13'4" x 23'0"	4.06 x 7.01
	Dining Room	9'4" x 12'6"	2.84 x 3.81
	Kitchen	12'0" x 9'4"	3.66 x 2.84
	Bedroom	20'10" x 7'8"	6.35 x 2.34
	Mudroom	8'0" x 7'8"	2.44 x 2.34
	Laundry	3'1" x 3'1"	0.94 x 0.94
	Utility	4'6" x 6'8"	1.37 x 2.03
SECOND	Primary Bedroom	16'2" x 10'0"	4.93 x 3.05
	+ 2-Pc Ensuite	6'6" x 2'9"	1.98 x 0.84
	+ Ensuite Walk-In Shower	5'2" x 2'9"	1.57 x 0.84
	Bedroom	12'7" x 9'5"	3.84 x 2.87
OTHER	Back Deck	40'0" x 26'0"	12.19 x 7.92
	Garage / Workshop	31'7" x 23'6"	9.63 x 7.16
	Drive Shed	10'0" x 13'0"	3.05 x 3.96
	Garden Shed	10'0" x 8'0"	3.05 x 2.44

Floor plan measurements and square footage are approximate, and drawings are for illustrative purposes only. We make no guarantee or warranty as to the accuracy and completeness of the floor plan. Please be sure to conduct an independent investigation of the property to determine to your satisfaction as to the suitability of the property for your space requirements.